

estate agents **auctioneers**



1A, 22 Tyndalls Park Road, Clifton, Bristol, BS8 1PY

£295,000

A spacious (700 sqft) and grand period apartment conveniently located apartment moments from Whiteladies Road. Private parking space. No onward chain.

- Prime Clifton Location
- Separate kitchen
- Large reception room
- Spacious bedroom
- Large Hallway
- Period features
- Gas central heating
- Allocated parking space

The Property

This spacious one-bedroom apartment is located on the hall floor of an imposing Georgian building set back and hidden from the road behind tall mature trees. Close to Bristol university and Whiteladies Road, Tyndalls Park Road is a prime location for professionals, students or families looking for a tranquil location in the heart of Clifton.

The apartment is entered via a large hallway and comprises a generously proportioned reception room, separate kitchen, bedroom and bathroom. The flat retains many period features with high ceilings, sash windows, wooden shutters dado rails and cornices.

The large hallway offers a versatile space which could serve as home office or dining area. The bright reception room features a stunning bay window adorned with working wooden shutters. Adjacent to this room is the kitchen fitted with blue tiles and white cupboards. The bathroom situated just off the hallway is fitted with a 3 piece white suite with a main fed shower over the bath. The bedroom also benefits from plenty of natural light with a beautiful Georgian window. Finally, outside, the property benefits from an allocated parking space.

Location - Clifton

Clifton and the surrounding areas, with its Victorian and Georgian architecture, are amongst the most sought after locations in the City. The area offers charm alongside excellent amenities with independent shops, boutiques, cafes, bars and restaurants to be found on both Whiteladies Road and Clifton Village including Clifton Down shopping Centre. The Downs offers four hundred acres of green public space whilst Brunel's Clifton Suspension Bridge provides a gateway to the Ashton Court Estate with its woodlands, mountain bike trails and walks whilst there is excellent access to the exciting Harbourside district, the City Centre and Temple Meads.

Other Information

Leasehold.

Management Fee: £130 PCM

Council Tax Band: B

Please Note

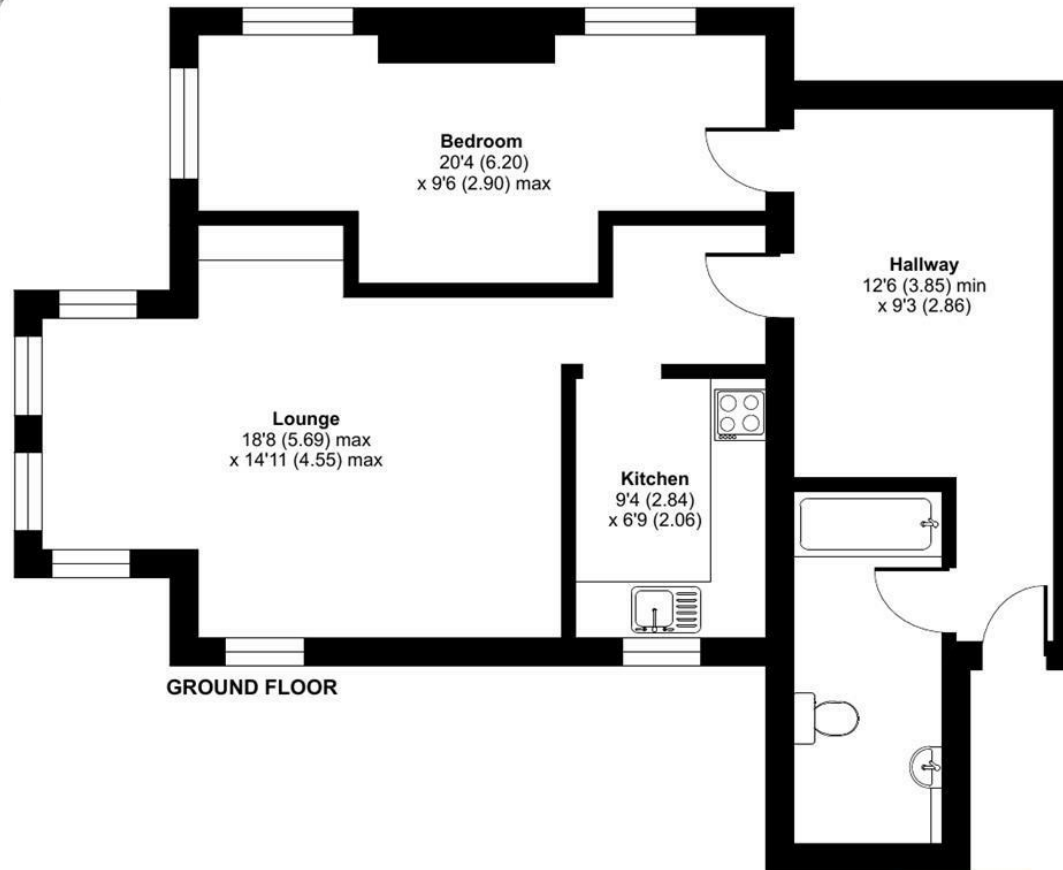
Hollis Morgan endeavour to make our sales details clear, accurate and reliable in line with the Consumer Protection from Unfair Trading Regulations 2008 but they should not be relied on as statements or representations of fact and they do not constitute any part of an offer or contract. All Hollis Morgan references to planning, tenants, boundaries, potential development, tenure etc is to be superseded by the information provided in your solicitors enquiries. It should not be assumed that this property has all the necessary Planning, Building Regulation or other consents. Any services, appliances and heating system(s) listed may not been checked or tested and you should rely on your own investigations. The seller does not make any representation or give any warranty in relation to the property and we have no authority to do so on behalf of the seller. Please note that in some instances the photographs may have been taken using a wide angle lens.



Tyndalls Park Road, Clifton, Bristol, BS8

Approximate Area = 717 sq ft / 66.6 sq m

For identification only - Not to scale



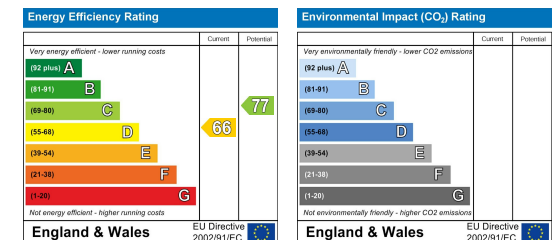
Floor plan produced in accordance with RICS Property Measurement Standards incorporating International Property Measurement Standards (IPMS2 Residential). © ncheom 2024. Produced for Hollis Morgan. REF: 1184875



TEL | 0117 933 9522 | 9 Waterloo Street, Clifton, Bristol BS8 4BT

www.hollismorgan.co.uk | post@hollismorgan.co.uk

Hollis Morgan Property Limited, registered in England, registered no 7275716
Registered address, 5 Upper Belgrave Road, Clifton, Bristol BS8 2XQ



hollis
morgan
